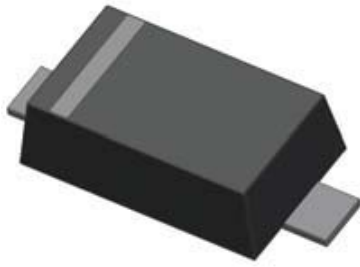
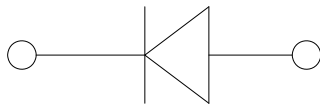


## Small Signal Schottky Barrier Diode



**SOD523**



### Features

- Epoxy meets UL-94 V-0 flammability rating and halogen free
- Moisture Sensitivity Level 1
- $V_{RRM}$  40V
- $I_{FAV}$  200mA
- Part no. with suffix "Q" means AEC-Q101 qualified

### Applications

- Low Forward Voltage Drop
- Automotive

### Mechanical Data

- **Case:** SOD523
- **Terminals:** Tin plated leads, solderable per J-STD-002 and JESD22-B102
- **Polarity:** Cathode line denotes the cathode end

### ■ Maximum Ratings ( $T_a=25^{\circ}\text{C}$ Unless otherwise specified)

PARAMETER	SYMBOL	UNIT	CONDITIONS	VALUE
Maximum Repetitive peak reverse voltage	$V_{RRM}$	V		40
DC Blocking Voltage	$V_R$	V		40
Average Forward Current	$I_{FAV}$	mA		200
Peak Forward Surge Current	$I_{FSM}$	A	8.3ms, half sine	2
Power Dissipation	$P_{tot}$	mW		150
Thermal Resistance Junction to Ambient	$R_{thJA}$	K/W		667
Junction Temperature	$T_J$	$^{\circ}\text{C}$		-55 to +125
Storage Temperature Range	$T_{stg}$	$^{\circ}\text{C}$		-55 to +125



## RB520S-40Q

### ■ Electrical Characteristics (T<sub>a</sub>=25°C Unless otherwise specified)

PARAMETER	SYMBOL	UNIT	CONDITIONS	MIN	MAX
Forward Voltage	V <sub>F</sub>	V	I <sub>F</sub> =100mA		0.55
Reverse Leakage Current	I <sub>R</sub>	uA	V <sub>R</sub> =10V		1
Reverse Breakdown Voltage	V <sub>BR</sub>	V	I <sub>R</sub> =10uA	40	
Junction Capacitance	C <sub>J</sub>	pF	V <sub>R</sub> =1V, f =1MHz		10
Reverse Recovery Time	t <sub>rr</sub>	ns	I <sub>F</sub> =I <sub>R</sub> =10mA, I <sub>rr</sub> =1mA, R <sub>L</sub> =100Ω		6

### ■ Ordering Information (Example)

PREFERED P/N	PACKING CODE	UNIT WEIGHT(g)	MINIMUM PACKAGE(pcs)	INNER BOX QUANTITY(pcs)	OUTER CARTON QUANTITY(pcs)	DELIVERY MODE
RB520S-40Q	F2	Approximate 0.002	8000	80000	320000	7" reel



## ■ Characteristics (Typical)

Fig.1:  $P_D-T_A$

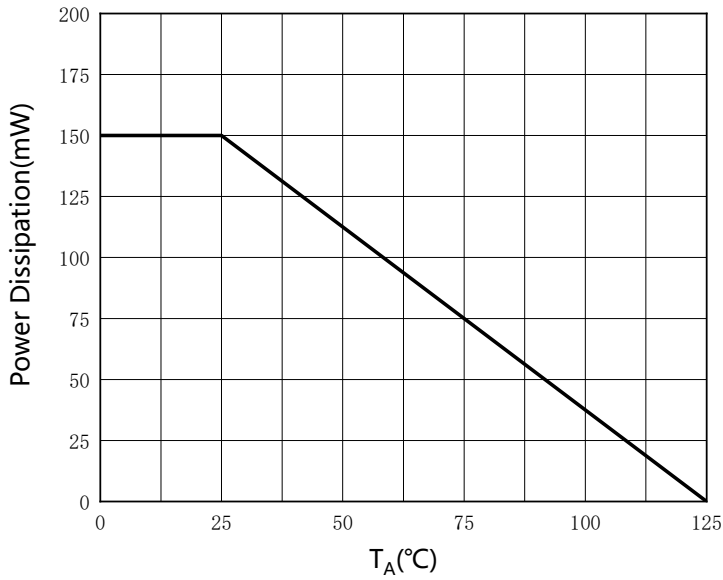


Fig.2 Capacitance Characteristics

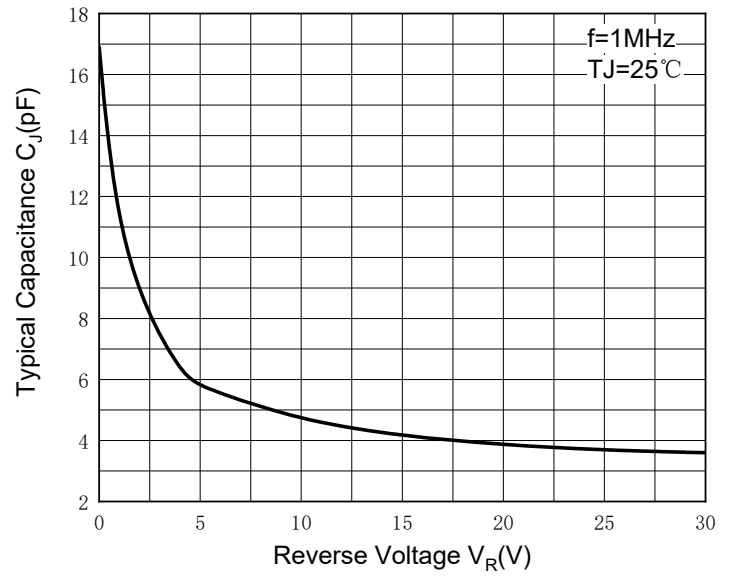


Fig.3: Forward Characteristics

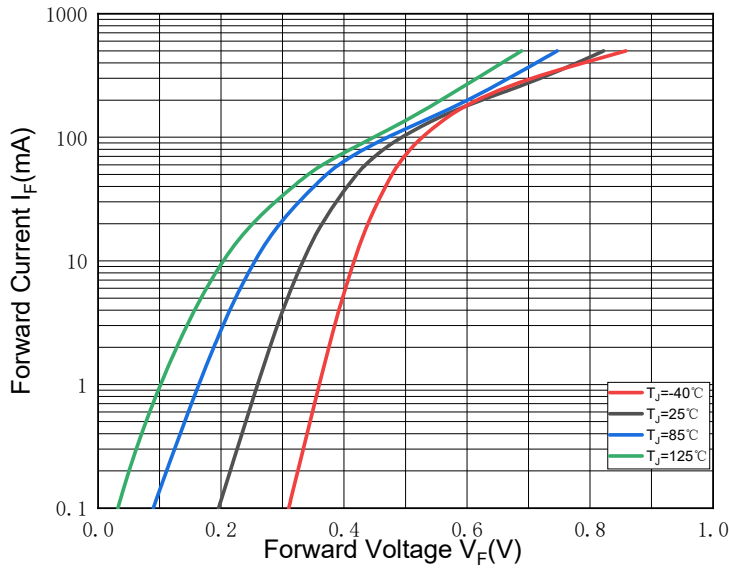
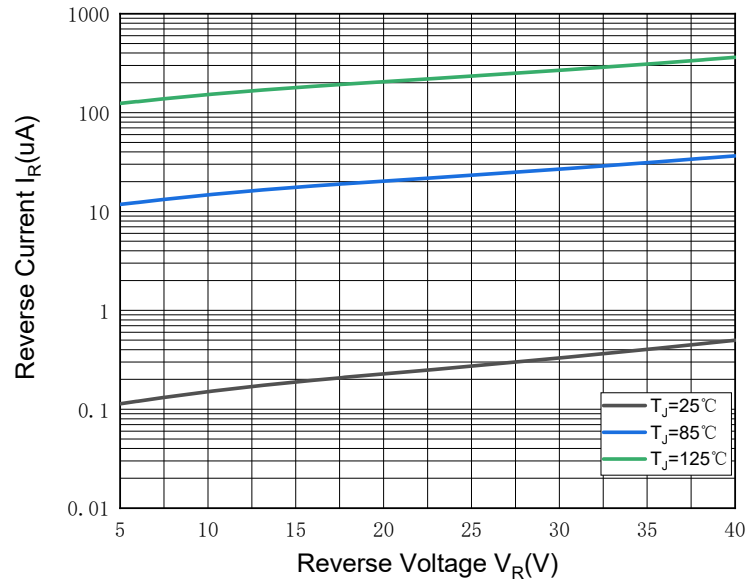


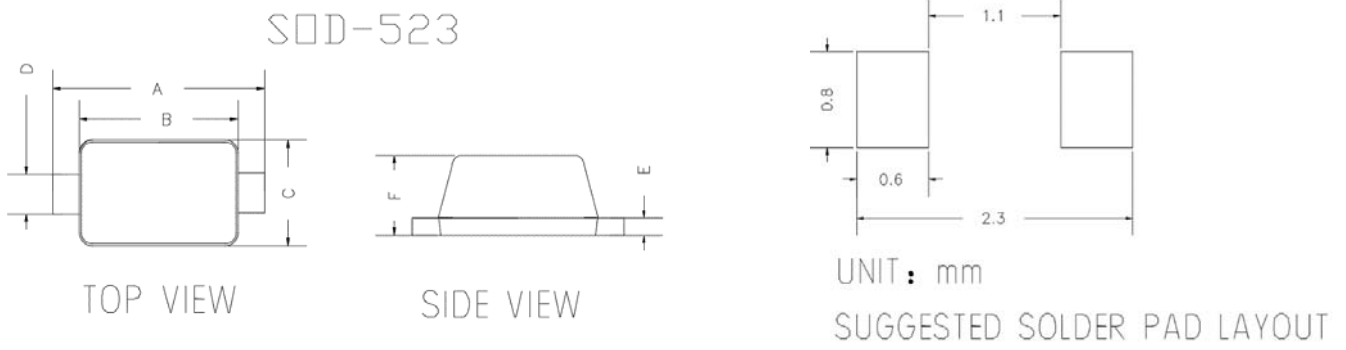
Fig.4: Reverse Characteristics





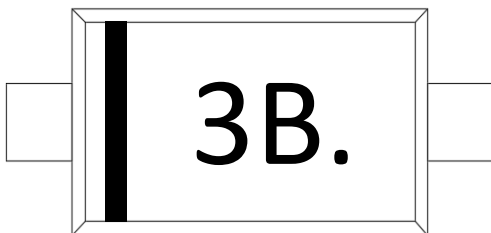
# RB520S-40Q

## ■ Outline Dimensions



DIMENSIONS				
DIM	INCHES		MM	
	MIN	MAX	MIN	MAX
A	0.059	0.067	1.500	1.700
B	0.043	0.051	1.100	1.300
C	0.028	0.035	0.700	0.900
D	0.010	0.014	0.250	0.350
E	0.002	0.008	0.050	0.200
F	0.020	0.028	0.500	0.700

## ■ Marking Information



**Note:**

1. All marking is at middle of the product body
2. All marking is in laser marking
3. Body color: Black



### Disclaimer

The information presented in this document is for reference only. Yangzhou Yangjie Electronic Technology Co., Ltd. reserves the right to make changes without notice for the specification of the products displayed herein to improve reliability, function or design or otherwise.

The product listed herein is designed to be used with automotive electronics, are not designed for use in medical, life-saving, life-sustaining, or military, Yangjie or anyone on its behalf, assumes no responsibility or liability for any damages resulting from such improper use of sale.

This publication supersedes & replaces all information previously supplied. For additional information, please visit our website [http:// www.21yangjie.com](http://www.21yangjie.com) , or consult your nearest Yangjie's sales office for further assistance.